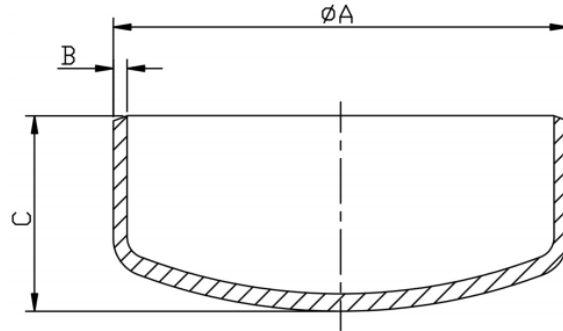




## Nominal Bore End Cap – Schedule 10



SIZE	A	B	C
½"	21.3	2.11	25.4
¾"	26.6	2.11	25.4
1"	33.4	2.77	38.1
1 ¼"	42.1	2.77	38.1
1 ½"	48.1	2.77	38.1
2"	60.3	2.77	38.1
2 ½"	73.0	3.05	50.4
3"	88.9	3.05	63.5
4"	114.3	3.05	76.2
5"	141.3	3.40	88.9
6"	168.3	3.40	101.6
8"	219.08	3.76	127.0
10"	273.0	4.19	152.4