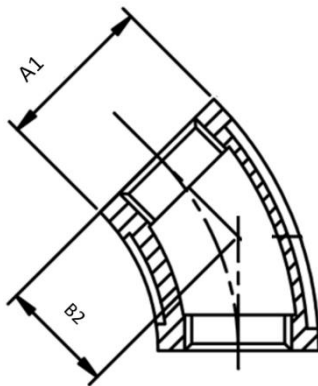




45 DEGREE BSP BEND



SIZE	A1	B2
1/8"	16.5	17.7
1/4"	21	18.6
3/8"	25	20.5
1/2"	29.5	22.5
3/4"	37	25
1"	45	28.2
1.25"	54.2	32.2
1.5"	59	36.4
2"	75	42
2.5"	86.5	47
3"	108.5	52
4"	136	63