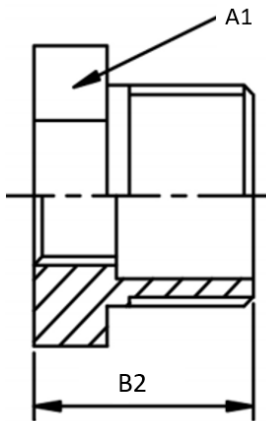




BSP REDUCING BUSH



SIZE	A1	B2
1/4" X 1/8"	14.5	14.5
3/8" X 1/8"	18	16
3/8" X 1/4"	18	16
1/2" X 1/8"	21.4	19.5
1/2" X 1/4"	21.4	19.5
1/2" X 3/8"	21.4	19.5
3/4" X 1/4"	27	21
3/4" X 3/8"	27	21
3/4" X 1/2"	27	21
1" X 1/4"	33.9	24
1" X 3/8"	33.9	24
1" X 1/2"	33.9	24

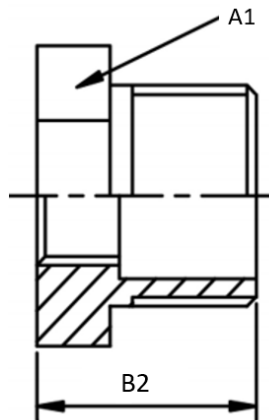
Please scroll down for further sizes

Telephone: (+44) 01384 424700

Email: sales@processflow.co.uk



BSP REDUCING BUSH



SIZE	A1	B2
1" X 3/4"	33.9	24
1 1/4" X 3/8"	42.7	27
1 1/4" X 1/2"	42.7	27
1 1/4" X 3/4"	42.7	27
1 1/4" X 1"	42.7	27
1 1/2" X 3/8"	48.6	27
1 1/2" X 1/2"	48.6	27
1 1/2" X 3/4"	48.6	27
1 1/2" X 1"	48.6	27
1 1/2" X 1 1/4"	48.6	27
2" X 1/2"	60.5	31
2" X 3/4"	60.5	31
2" X 1"	60.5	31
2" X 1 1/4"	60.5	31

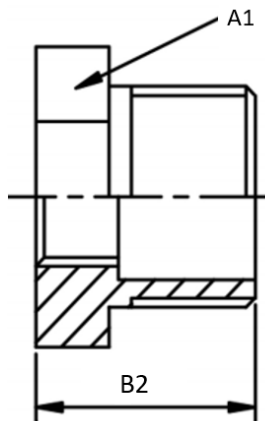
Please scroll down for further sizes

Telephone: (+44) 01384 424700

Email: sales@processflow.co.uk



BSP REDUCING BUSH



SIZE	A1	B2
2" X 1 1/2"	60.5	31
2 1/2" X 3/4"	78	34
2 1/2" X 1"	78	34
2 1/2" X 1 1/4"	78	34
2 1/2" X 1 1/2"	78	34
2 1/2" X 2"	78	34
3" X 1"	91	38
3" X 1 1/4"	91	38
3" X 1 1/2"	91	38
3" X 2"	91	38
3" X 2 1/2"	91	38
4" X 1 1/2"	116	44
4" X 2"	116	44
4" X 2 1/2"	116	44
4" X 3"	116	44

Telephone: (+44) 01384 424700

Email: sales@processflow.co.uk