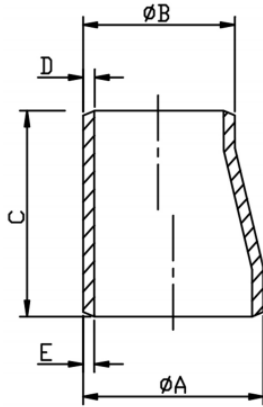




## Eccentric Reducer – Schedule 40



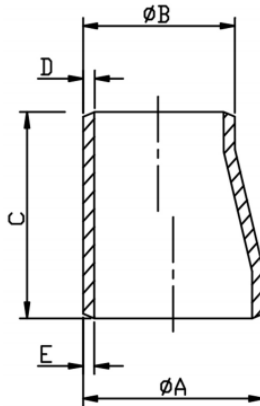
SIZE	A	B	C	D	E
$\frac{3}{4}'' \times \frac{1}{2}''$	26.6	21.3	38.1	2.77	2.87
$1'' \times \frac{1}{2}''$	33.4	21.3	50.8	2.77	3.38
$1'' \times \frac{3}{4}''$	33.4	26.6	50.8	2.87	3.38
$1 \frac{1}{4}'' \times 1''$	42.1	33.4	50.8	3.38	3.56
$1 \frac{1}{2}'' \times \frac{1}{2}''$	48.3	21.3	63.5	2.77	3.68
$1 \frac{1}{2}'' \times \frac{3}{4}''$	48.3	26.6	63.5	2.87	3.68
$1 \frac{1}{2}'' \times 1''$	48.3	33.4	63.5	3.38	3.68
$1 \frac{1}{2}'' \times 1 \frac{1}{4}''$	48.3	42.1	63.5	3.56	3.68
$2'' \times \frac{3}{4}''$	60.3	26.6	76.2	2.87	3.91

Telephone: (+44) 01384 424700

Email: [sales@processflow.co.uk](mailto:sales@processflow.co.uk)



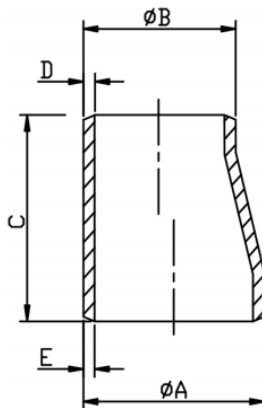
## Eccentric Reducer – Schedule 40



SIZE	A	B	C	D	E
2" x 1"	60.3	33.4	76.2	3.38	3.91
2" x 1 ¼"	60.3	42.1	76.2	3.56	3.91
2" x 1 ½"	60.3	48.3	76.2	3.68	3.91
2 ½" x 1 ½"	73	48.3	88.9	3.68	5.16
2 ½" x 2"	73	60.3	88.9	3.91	5.16
3" x 1 ½"	88.9	48.3	88.9	3.68	5.49
3" x 2"	88.9	60.3	88.9	3.91	4.49
3" x 2 ½"	88.9	73	88.9	5.16	5.49
4" x 2"	114.3	60.3	101.6	3.91	6.02



## Eccentric Reducer – Schedule 40



SIZE	A	B	C	D	E
4" x 2 1/2"	114.3	73	101.6	5.16	6.02
4" x 3"	114.3	88.9	101.6	5.49	6.02
5" x 3"	141.3	88.9	127	5.49	6.55
5" x 4"	141.3	114.3	127	6.02	6.55
6" x 3"	168.3	88.9	139.7	5.49	7.11
6" x 4"	168.3	114.3	139.7	6.02	7.11
6 x 5"	168.3	141.3	139.7	6.55	7.11