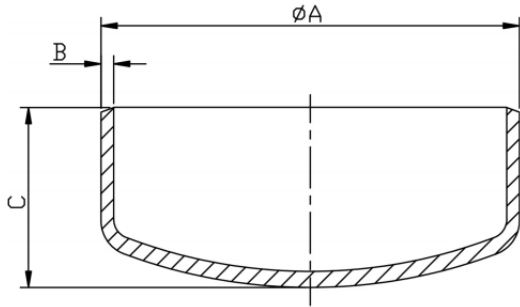




Metric End Cap



SIZE	A (mm)	B (mm)	C (mm)
26mm	24	2.0	7
44mm	40	2.0	13
54mm	50	2.0	15
84mm	80	2.0	22
104mm	100	2.0	26
129mm	125	2.0	35
154mm	150	2.0	42
204mm	200	2.0	60
254mm	250	2.0	70