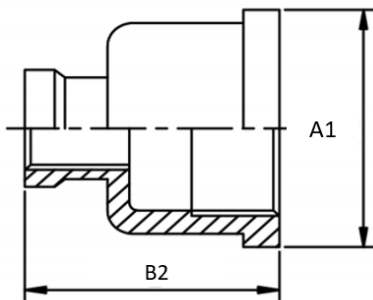




## BSP REDUCING SOCKETS

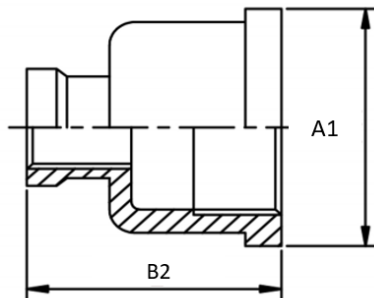


SIZE	A1	B2
1" X 3/4"	40	38
1 1/4" X 1/2"	49	40
1 1/4" X 3/4"	49	41
1 1/4" X 1"	49	45
1 1/2" X 1/2"	55	41
1 1/2" X 3/4"	55	42
1 1/2" X 1"	55	46
1 1/2" X 1 1/4"	55	49
2" X 1/2"	68	45
2" X 3/4"	68	46
2" X 1"	68	50
2" X 1 1/4"	68	53

Please scroll down for further sizes



## BSP REDUCING SOCKETS



SIZE	A1	B2
1" X 3/4"	40	38
1 1/4" X 1/2"	49	40
1 1/4" X 3/4"	49	41
1 1/4" X 1"	49	45
1 1/2" X 1/2"	55	41
1 1/2" X 3/4"	55	42
1 1/2" X 1"	55	46
1 1/2" X 1 1/4"	55	49
2" X 1/2"	68	45
2" X 3/4"	68	46
2" X 1"	68	50
2" X 1 1/4"	68	53

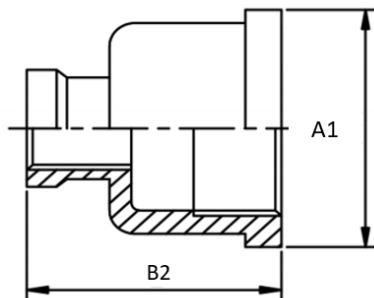
Please scroll down for further sizes

Telephone: (+44) 01384 424700

Email: sales@processflow.co.uk



## BSP REDUCING SOCKETS



SIZE	A1	B2
2" X 1 1/2"	68	54
2 1/2" X 1 1/2"	84	57
2 1/2" X 2"	84	61
3" X 1 1/2"	97.5	60
3" X 2"	97.5	64
3" X 2 1/2"	97.5	67
4" X 2"	124	70
4" X 2 1/2"	124	73
4" X 3"	124	76

Telephone: (+44) 01384 424700

Email: sales@processflow.co.uk